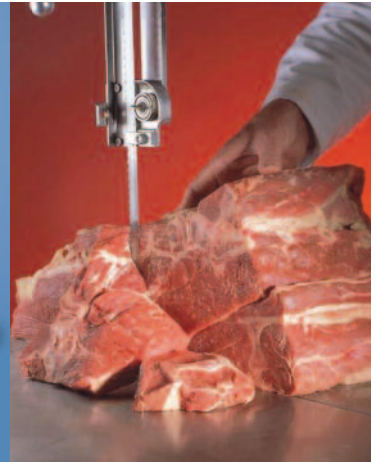


Saws & Blades



KAM-LOK Professional Hand Saws

Featuring the original Kam-Lok quick change lever. hand crafted from the finest grade stainless steel, with a solid, high strength polymer handle.

DOUBLE-CUT Mincer Knives and Plates

The Atlanta SharpTech DOUBLE-CUT, plate and Knife System is made from high grade steel, for long life and durability. It's thinner plate design gives cooler cutting, less spoilage

Available to fit mincers sizes 12, 22, 32, and 52. Available hole sizes, 2.5mm $\frac{3}{32}$ ", 3.5mm $\frac{1}{8}$ ", 5mm $\frac{3}{16}$ ", 9mm $\frac{3}{8}$ ". Suitable for American and European makes of mincers.

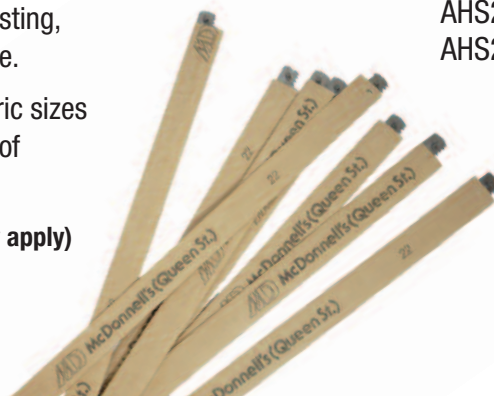


Large volume heavy duty Bandsaw Blades

This (AKH) series of Bandsaw Blades has the strength to stand up to the rigors of high volume, high feed, heavy duty operation. Long lasting, durable hardened tipped blade.

Available in imperial and metric sizes to suit all makes and models of Bandsaws.

(minimum order quantities may apply)



Saws

AHS17	17.5" Frame
AHS20	20" Frame
AHS22	22" Frame
AHS25	25" Frame

Replacement Blades

AHB17	17.5" Blade
AHB20	20" Blade
AHB22	22" Blade
AHB25	25" Blade



www.mcdonnells.ie

Tel. +353 1 677 8123

McDonnells Ltd., 19-20 Blackhall St., Dublin 7



McDonnells
suppliers to the food trade